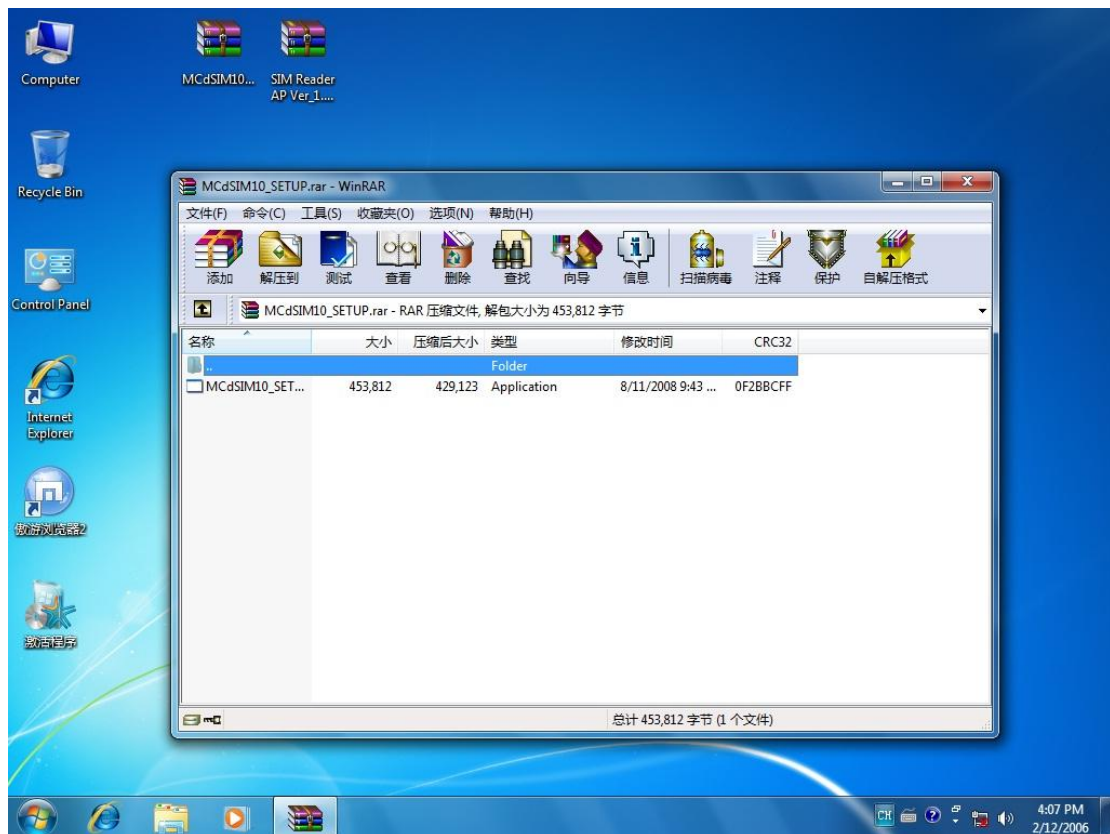
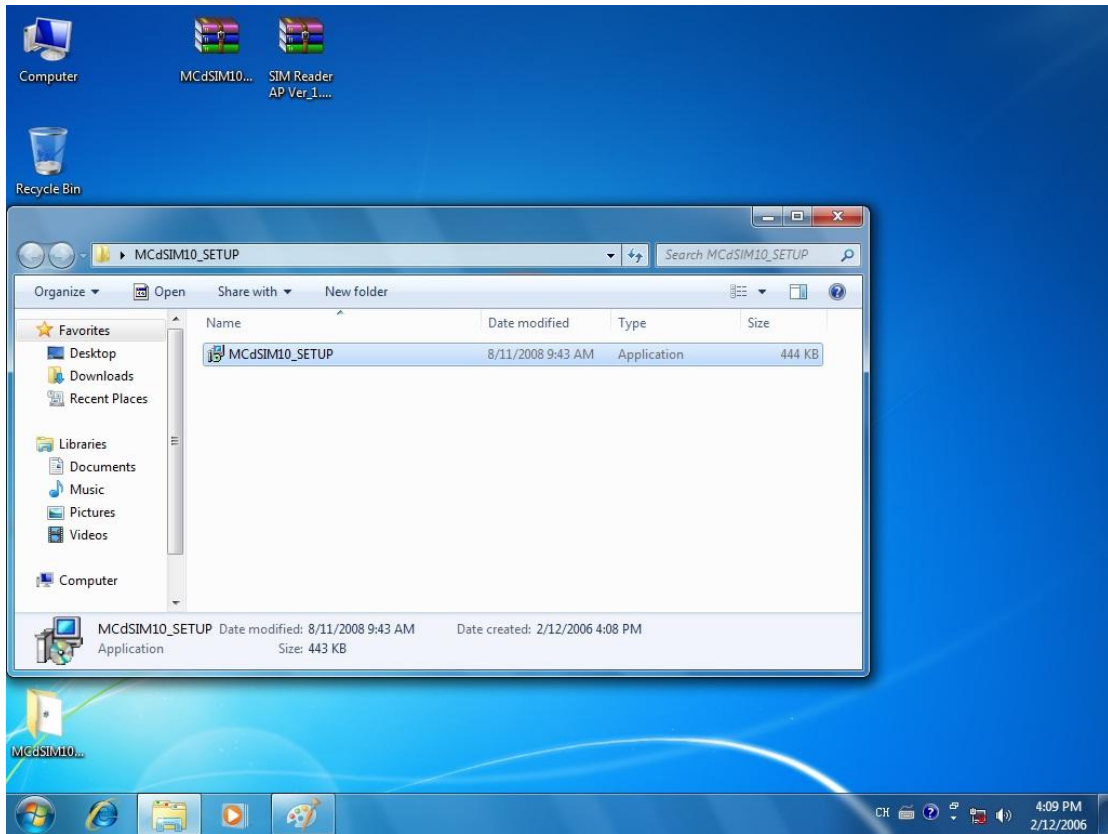


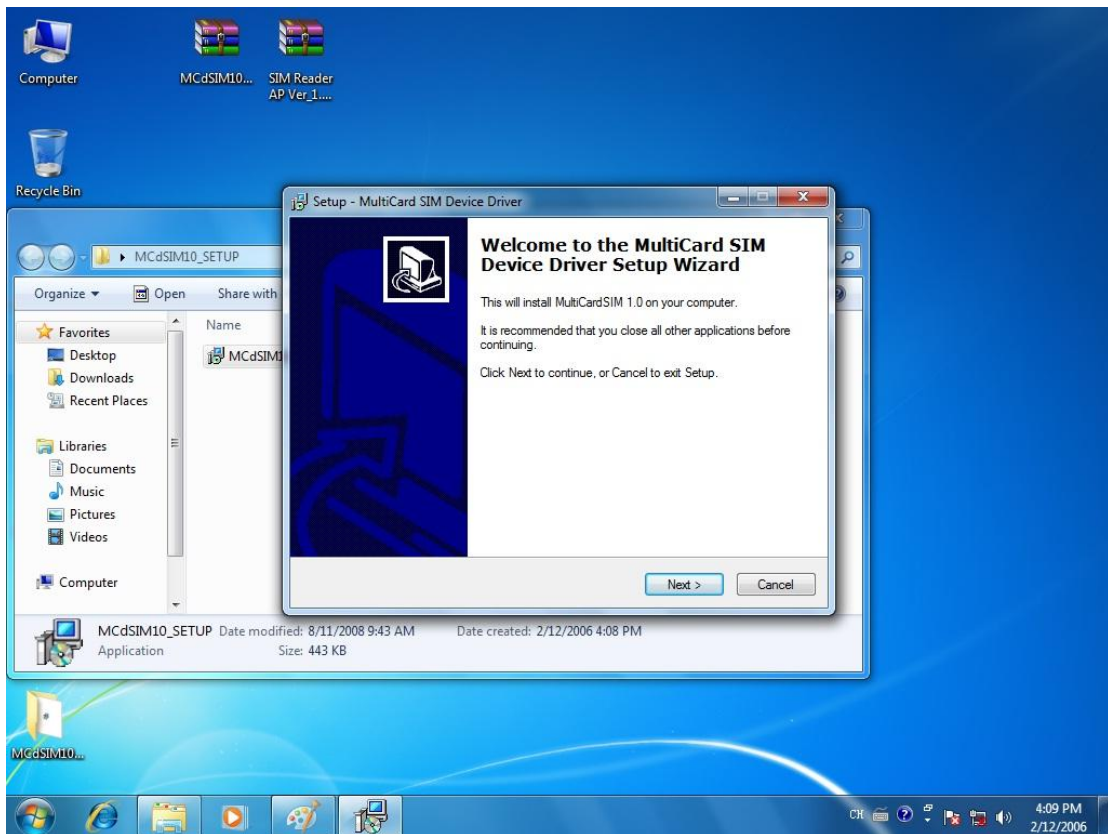
Smart card reader driver install step for win7



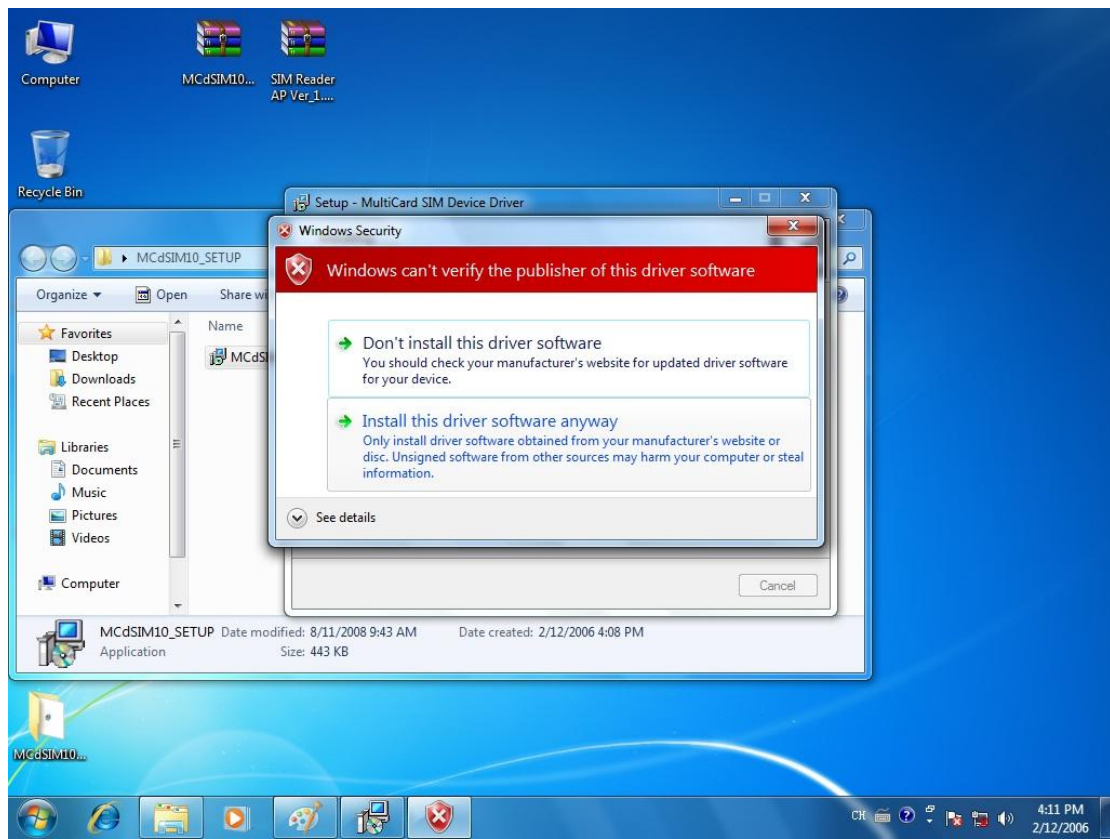
Double click [MCdSIM10_SETUP.rar](#) and extract it.



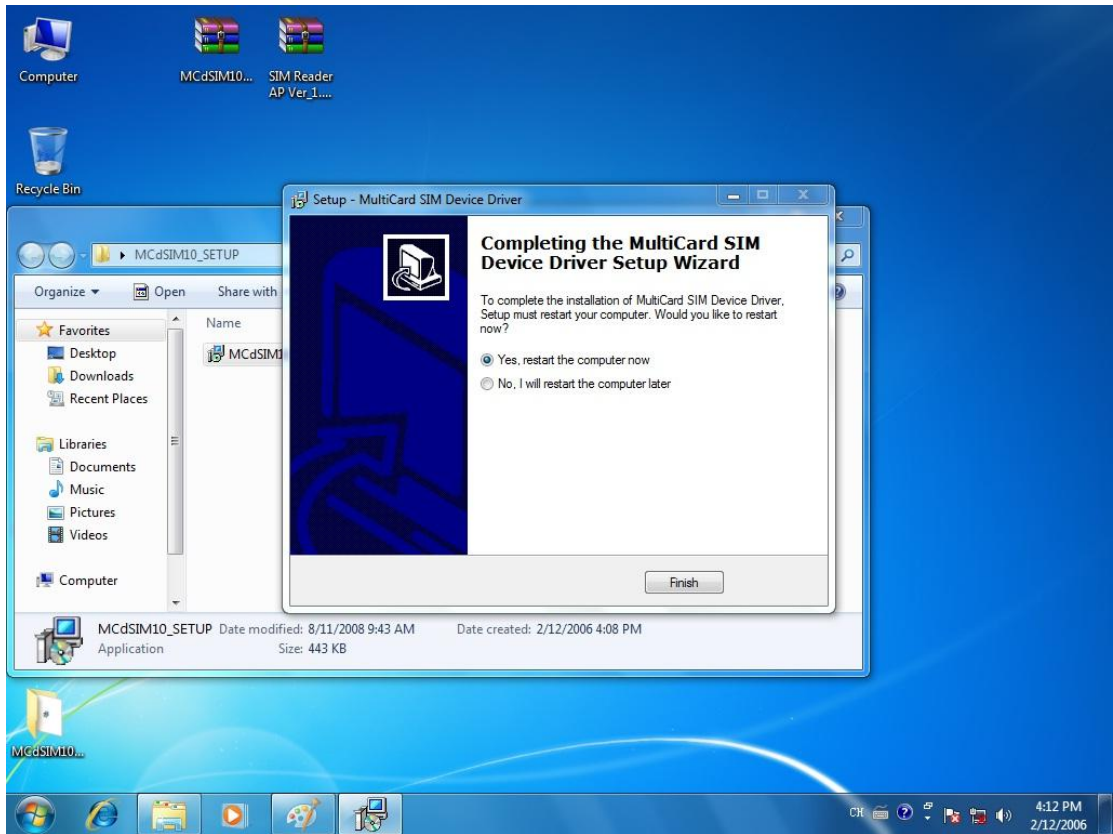
Double click [MCdSIM10_SETUP.exe](#)



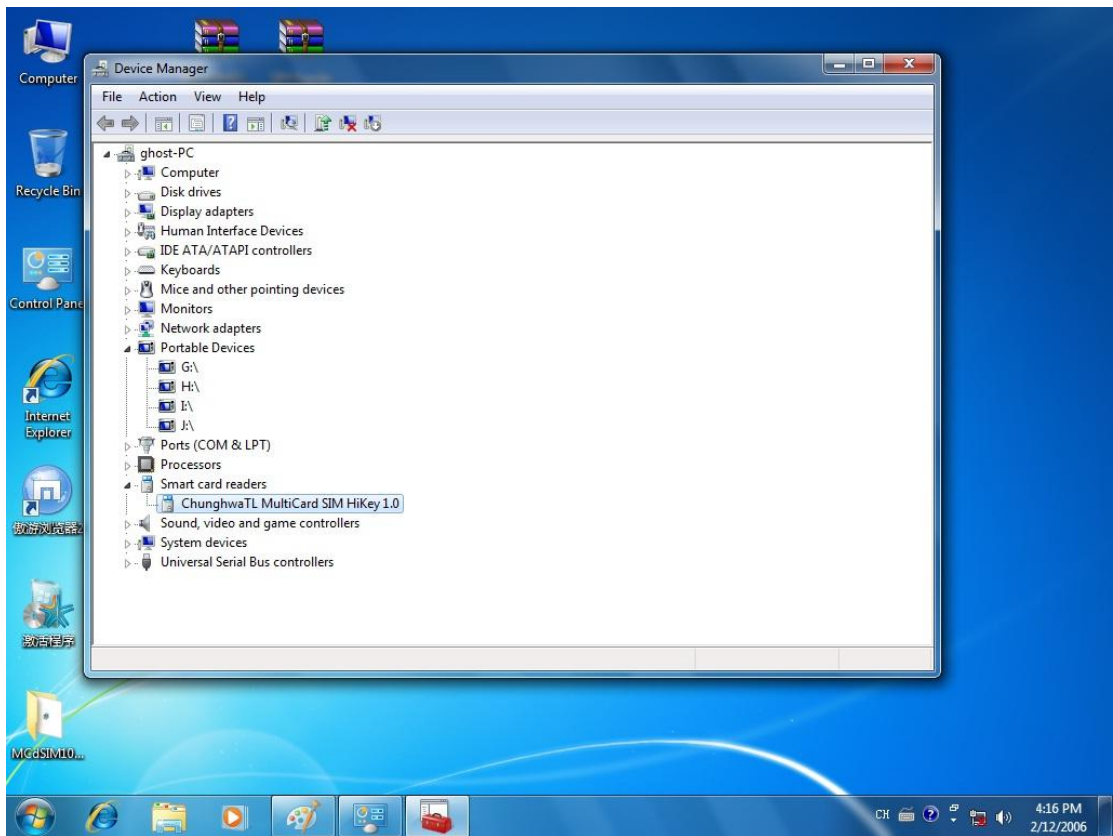
Click [Next](#)



Choose [Install this driver anyway](#)



Click [Finish](#), complete install the driver.



Insert the “smart card reader” to usb port, system will detect it automatic, we can use the device now.